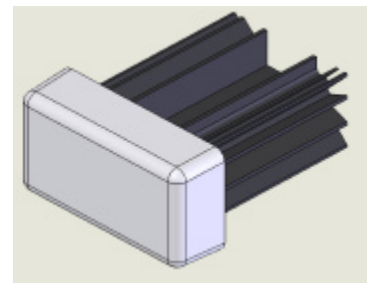


BAT-GUARD Model BR3.67 Datasheet

Features:

- * Stable and accurate Voltage shunt to protect LiFePO batteries from overcharging.
- * Heat sink capable of bypassing 15 Watts of energy.
- * Reverse Voltage capability of 5.0 Volts DC without damaging internal circuitry.
- * 5 Amp Automotive Blade fuse to protect regulator if DC charging current is too high.
- * Solid State electronics encapsulated for long life and protection from debris.
- * 8" [200 mm] long 18 gauge red and black coded wires for parallel connection to battery.
- * Amber LED that comes on when Regulator is absorbing energy, protecting battery from overcharging.
- * Red LED that comes on if fuse is blown.



Description

The Battery Regulator incorporates precision solid state circuitry to prevent over-voltage conditions when charging LiFePO batteries with charging currents of up to 4 Amps. It contains an ultrastable voltage reference and shunt circuit that will prevent LiFePO batteries from reaching an overcharged state when used within design limitations listed. Other voltages, wire lengths, and terminations available, contact factory for details.

Ordering Information: BR3.67

Absolute Maximums	Minimum	Nominal	Maximum	Units	Test Conditions
DC Current			4	Amps	Notes 1,2
DC Voltage	-5		3.75	Volts	
Ambient Temperature			40	C	4 Amps Current
Power Disipation			15	Watts	

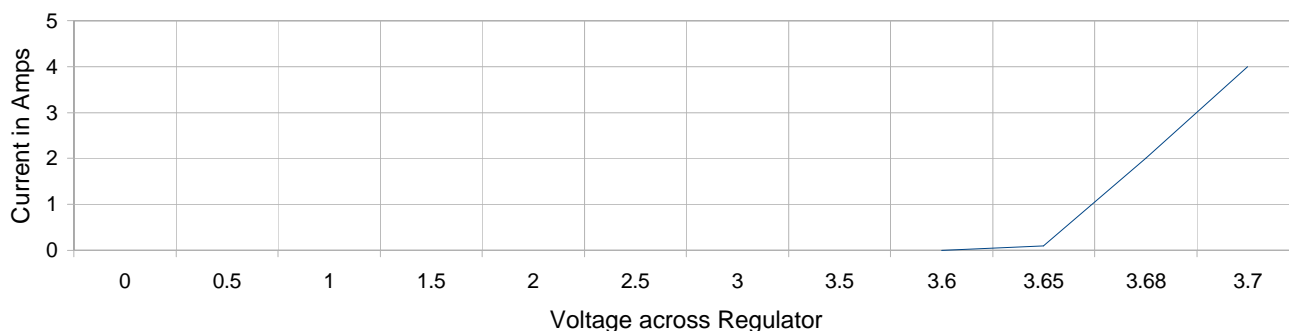
Specifications:	Minimum	Nominal	Maximum	Units	Test Conditions
Clamp Voltage	3.648	3.670	3.692	Volts	1 Amp DC current
Standby Current		225	350	uA	3.5 Volts

Notes:

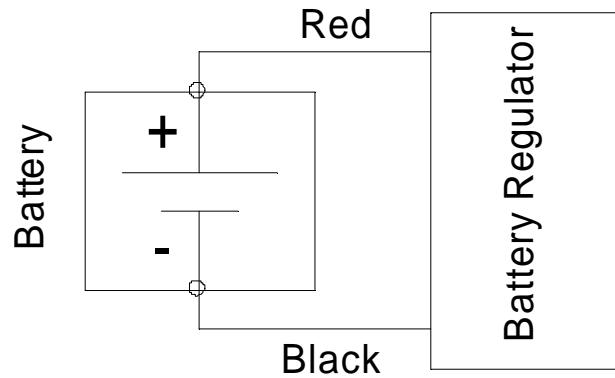
- 1) Adequate free air space to allow dissipation of heat.
- 2) Heat Sink will get hot to the touch, and may cause burns - heat sink is electrically isolated.

LL Labs reserves the right to make changes at any time in order to improve design and to supply the best product possible.

Typical Voltage vs Current



Wiring Diagram:



Mechanical:

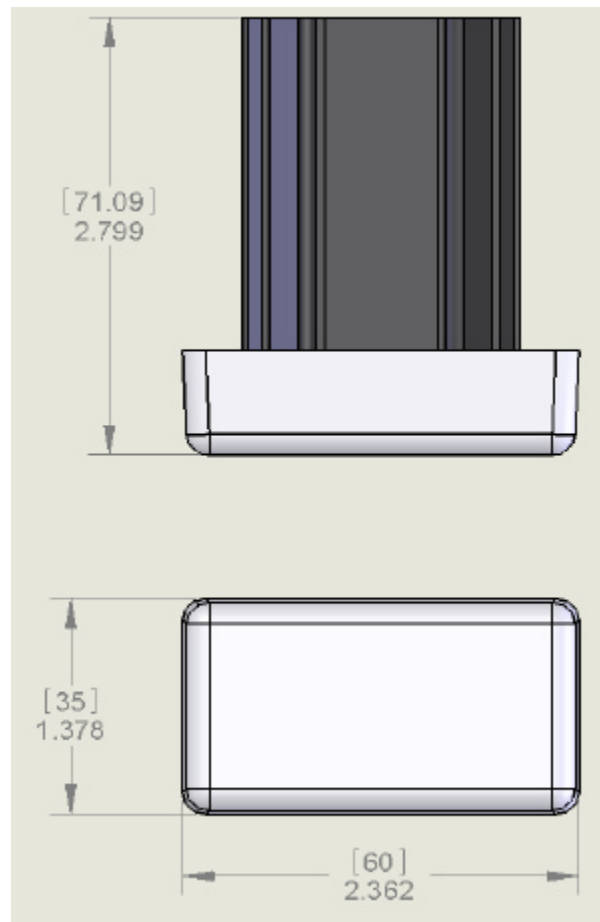
Unit is 2.36" W x 1.38" D x 2.80" H (60mm x 35mm x 71mm)

Weight: 2 oz (85 g)

Storage Temperature -40 to 100 Celsius

Operating Temperature: -40 to 85 Celsius by 0.2 Watts/C above 40 Celsius Ambient

Mount to battery or bus bar using double sided tape (not included)



Warranty:

This product is guaranteed to be free from manufacturing defects for 90 days from date of purchase. Upon return of defective product, LL Labs will either repair or replace defective units.